

## The Species of birds from the protected area ROSPA0062 – the dam basins from the Argeș River – observed during the World Championship of Kaiac-Canoe Sprint Juniors and Youth U23 (Bascov Basin, 2017)

Adrian Mestecăneanu<sup>1,✉</sup> and Radu Gava<sup>2</sup>

**SUMMARY.** In this paper we present the results of the researches performed on the dam basins from ROSPA0062 - The dam basins from the Argeș River during the World Championship of Kaiac-Canoe Sprint Juniors and Youth U23, held on the Bascov Basin, part of this protected area. 55 species of birds were registered. Even if in 2017 the general situation was better than in 2013, when a similar study was carried on during a period when there were no sportsmen on any basin, the situation was completely different on Bascov Basin. There was a similar number of species, albeit only 35.71% of all were common in the two sets of observations, but, regarding their abundences, these were lower than in 2013 with over 90%, the most affected being the species dependent on wetlands. The human impact is obvious as the nautical base from Bascov Basin is a permanent factor of stress for the birds from the area. The very small number of species from the Annex I of the Birds Directive observed here strengthens the previously mentioned facts.

**Keywords:** anthropogenic pressure, birds, dam basin, protected area.

### Introduction

The avifauna of the dam basins from the Argeș River was well studied along the time, although a lot of data in regard remained unpublished (Mătieș, unpublished data). The first work on the theme appeared at the end of the '60 after the ending of the Vidraru Basin construction (Mătieș, 1969). It was followed by references in two papers (Munteanu and Mătieș, 1983, Munteanu *et al.*, 1989) that covered the birds from several wetlands from Romania and some particular information has been published later (Gava, 1997). The studies were intensified after 2004 (Gava *et al.*, 2004a,b, 2007,

---

<sup>1</sup> Argeș County Museum, Armand Călinescu Str., No. 44, 110047, Pitești, Argeș, Romania.

<sup>2</sup> University of Pitești, Târgu din Vale Str., No. 1, 110040, Pitești, Argeș, Romania.

✉ **Corresponding author: Adrian Mestecăneanu**, Argeș County Museum, Armand Călinescu Str., No. 44, 110047, Pitești, Argeș, Romania,  
E-mail: mestecaneanua@yahoo.com

2011, Mestecăneanu *et al.*, 2004, 2010, 2013, Conete *et al.*, 2006, 2011, 2012, Conete, 2011, Mestecăneanu and Gava, 2015a,b, 2016a,b,c, 2017 etc.). The avifauna of the Bascov Basin was particularly studied, in the context of the big negative influence caused by the human impact (Conete *et al.*, 2005a,b, 2008, Mestecăneanu and Gava, 2014a,b).

We consider that the present study will prove the changes of the local ornithofauna in the future.

### **Materials and methods**

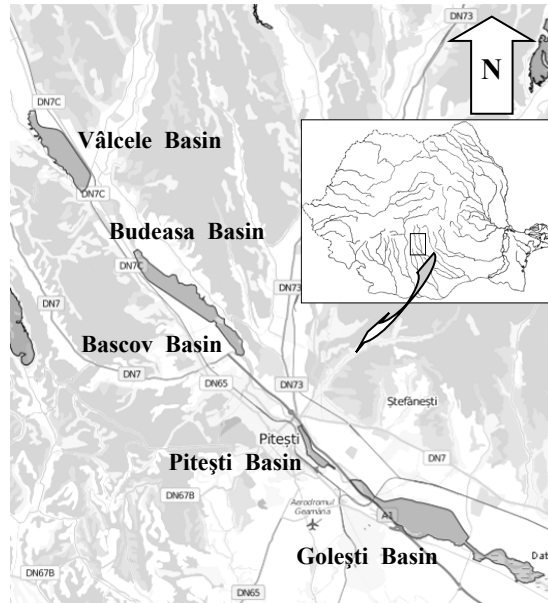
The Vâlcele (640 ha), Budeasa (643 ha), Bascov (140 ha), Pitești (150 ha) and Golești (680 ha) basins appertain to the ROSPA0062 – The dam basins from the Argeș River (in Romanian, „Lacurile de acumulare de pe Argeș”), together with the Zigoneni Basin, the last one upstream among them. They are part of the Natura 2000 Network, according to the Government Decision No. 1284/2007. Previously, these basins have been declared protected wetlands at local level (conform to the Decision No. 4/1974 of the Popular Council of the Argeș County).

The Bascov Basin (initially, 162 ha) is arranged for nautical sports since 1982 (cf. <http://informatiioferte.blogspot.com/2014/06/complexul-sportiv-national-bascov.html>, accessed June 12, 2018). It was registered by the Argeș Natural Monuments Commission and the officials of the Argeș County Museum as ornithological reservation and proposed to validation through the Decision No. 30/26.02.2004 of the Argeș County Council. As a result, the Government Decision No. 2151/2004 (No. service of Natural Monuments Commission, Cj 93/19.03.2003) declared it as avifaunistic protection area, comprising the water surface between the Bascov and Budeasa dams (cf. Management Plan of Natura 2000 Site, ROSPA0062 Lacurile de acumulare de pe Argeș, <https://lege5.ro/>).

The five basins, where the research was accomplished, have been put into operation between 1970 and 1983 and were chiefly created for production of electrical energy, attenuation of the floods, and supplying with water of the objectives from the area (cf. <http://www.baraje.ro>).

As the name of the whole protected area mentions, these dam reservoirs are situated on the Argeș River (Fig. 1), that drains a major part of the Southern versant of the Făgăraș Mountains and the corresponding lower relief. The Argeș and the Căndești Hills border their left side and the Cotmeana Piedmont, the right side. Pitești is the point where the Romanian Plain begins, so the Golești Basin is situated into an area that has the full plain features.

The climate is temperate-continental with hilly influence, in the North, and kinds of plain, in the South. The annual average temperature of the air is 9-10 °C. The water is a few degrees warmer than the air, so its annual average temperature fluctuates between 6.4 °C, in the Argeș Gorges and 9 °C, at Pitești. It is usual to see an ice bridge during the harsh winters between the first half of January and the last part of February (Barco and Nedelcu, 1974).



**Figure 1.** The map of the area (by <http://biodiversitate.mmediu.ro>, modified).

During both observations (2013 and 2017), the weather was sunny and warm. In 2017, there were quite big waves on the Golești, Bascov and Budeasa Basins, caused by the blowing wind, at gust, up to 3-4 on Beaufort scale, and, in 2013, the wind was 0, and no significant waves on the basins.

The vegetation of the basins corresponds to the diverse stages of the basins silting. It is typical for the wetlands of Romania and it grows mainly to the end of the lakes and on some parts of the banks, partially provided with bevels. There are small areas of reedbeds (*Phragmites* sp., *Typha* sp.). Other wetland plants from the genera *Myriophyllum*, *Sparganium*, *Mentha*, *Polygonum* emerge in the shallow waters. The banks are populated with species of *Carex*, *Juncus*, *Salix*, *Alnus*, *Populus* etc.

The observations were performed on July 29, 2017 during the World Championship of Kaiac-Canoe Sprint Juniors and Youth U23 from the Bascov Basin, and the obtained data was compared with the ones gathered on July 19, 2013, when the sportsmen were absent from the area. The same tracks of the itinerary method and point of observations were used during both of the days of research and the attention was focused on the aquatic species. The period of monitoring was 8:00 – 14:00. The birds were visually and auditory identified. Two binoculars (10x50) and a spotting scope (14-45x50) were used.

The avian scientific terms are the same availed in the Hamlin Guide (Bruun *et al.*, 1999).

Regarding the methods of the data processing, we used analytics ecological indicators (the density, the abundance, the constancy, the dominancy) and synthetics ecological indicators (the Dzuba index of ecological significance, the Bray–Curtis and Jaccard indices). They served for the identification of the species with the biggest weight in the ecosystem under the aspect of the energetical exchanges with the environment, of the characteristic or occasional species of the avicoenose, and of the ecological relations between the species. The Shanon–Wiener and Simpson indices (Stan, 1995, Gomoiu and Skolka, 2001) were also used, for the calculation of the diversity and the corresponding evenness and the standard procedure (Kelemen and Szombath, 1975, Gache, 2002) was applied to establish the index of relation, which shows the importance of the species or of the group of species in the respective coenose. The power function was used, too. It reflects the Theory of Island Biogeography (MacArthur and Wilson, 1967, in David, 2008) that supposes that the growth rate of the species increases as the surface increase. The correlations between parameters were explained by Zamfirescu and Zamfirescu (2006).

### Results and discussion

On July 29, 2017, 55 species from 12 orders – Podicipediformes (with 2 species), Pelecaniformes (with 2 species), Ciconiiformes (with 4 species), Anseriformes (with 6 species), Falconiformes (with 1 species), Galliformes (with 1 species), Gruiformes (with 2 species), Charadriiformes (with 12 species), Columbiformes (with 2 species), Apodiformes (with 1 species), Coraciiformes (with 1 species) and Passeriformes (the richest, with 20 species) were observed on the basins of interest from the Argeş River. Among them, 30 species are dependent on wetlands and belong to 7 orders (Table 1).

**Table 1.**

The species of birds observed on the basins between Vâlcele and Goleşti, some ecological indexes and their protection by the Birds Directive.

No	Species	Vâlcele Basin	Budeasa Basin	Bascov Basin	Piteşti Basin	Goleşti Basin	Abundance	Class of constancy	Class of dominancy	Class of Dzuba index of ecological significance	Class of dominancy*	Class of Dzuba index of ecological significance*	Birds Directive (2009/147/EC)
1	<i>Podiceps cristatus</i> (Linnaeus, 1758)*	+	+	+		+	153	C4	D3	W3	D3	W3	
2	<i>Podiceps nigricollis</i> Brehm, 1831*					+	2	C1	D1	W1	D1	W1	
3	<i>Phalacrocorax carbo</i> (Linnaeus, 1758)*	+	+		+	+	175	C4	D3	W3	D4	W3	

THE SPECIES OF BIRDS FROM THE PROTECTED AREA ROSPA0062

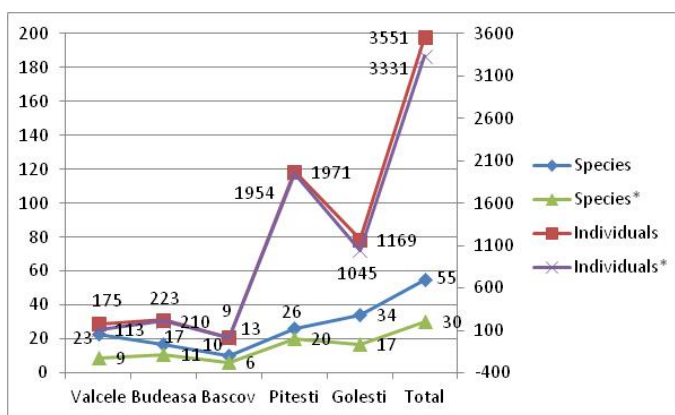
No	Species	Vâlcele Basin	Budeasa Basin	Bascov Basin	Pitești Basin	Golești Basin	Abundance	Class of constancy	Class of dominance	Class of Dzuba index of ecological significance	Class of dominance*	Class of Dzuba index of ecological significance*	Birds Directive (2009/147/EC)
4	<i>Phalacrocorax pygmeus</i> (Pallas, 1773)*	+			+	+	31	C3	D1	W2	D1	W2	AI
5	<i>Egretta garzetta</i> (Linnaeus, 1766)*	+	+		+	+	33	C4	D1	W2	D1	W2	AI
6	<i>Ardeola ralloides</i> (Scopoli, 1769)*				+		1	C1	D1	W1	D1	W1	AI
7	<i>Ardea cinerea</i> Linnaeus, 1758*	+	+		+		17	C3	D1	W2	D1	W2	
8	<i>Nycticorax nycticorax</i> (Linnaeus, 1758)*				+	+	12	C2	D1	W2	D1	W2	AI
9	<i>Cygnus olor</i> (Gmelin, 1789)*		+				1	C1	D1	W1	D1	W1	
10	<i>Anas platyrhynchos</i> Linnaeus, 1758*	+	+	+	+	+	208	C4	D4	W4	D4	W4	
11	<i>Anas querquedula</i> Linnaeus, 1758*	+					3	C1	D1	W1	D1	W1	
12	<i>Anas crecca</i> Linnaeus, 1758*				+		14	C1	D1	W1	D1	W1	
13	<i>Tadorna tadorna</i> (Linnaeus, 1758)*				+		6	C1	D1	W1	D1	W1	
14	<i>Aythya ferina</i> (Linnaeus, 1758)*					+	206	C1	D4	W3	D4	W3	
15	<i>Buteo buteo</i> (Linnaeus, 1758)	+					1	C1	D1	W1			
16	<i>Coturnix coturnix</i> (Linnaeus, 1758)					+	1	C1	D1	W1			
17	<i>Gallinula chloropus</i> (Linnaeus, 1758)*				+		1	C1	D1	W1	D1	W1	
18	<i>Fulica atra</i> Linnaeus, 1758*	+	+	+	+	+	672	C4	D5	W5	D5	W5	
19	<i>Vanellus vanellus</i> (Linnaeus, 1758)*				+		28	C1	D1	W2	D1	W2	
20	<i>Actitis hypoleucos</i> (Linnaeus, 1758)*					+	5	C1	D1	W1	D1	W1	
21	<i>Tringa ochropus</i> Linnaeus, 1758*				+	+	3	C2	D1	W1	D1	W1	
22	<i>Tringa glareola</i> Linnaeus, 1758*				+		2	C1	D1	W1	D1	W1	AI
23	<i>Tringa nebularia</i> (Gunnerus, 1767)*				+		1	C1	D1	W1	D1	W1	
24	<i>Himantopus himantopus</i> (Linnaeus, 1758)*				+		17	C1	D1	W1	D1	W2	AI
25	<i>Larus michahellis</i> Naumann, 1840*	+	+		+	+	205	C4	D4	W3	D4	W3	
26	<i>Larus ridibundus</i> Linnaeus, 1766*	+	+	+	+	+	1,521	C4	D5	W5	D5	W5	
27	<i>Larus minutus</i> Pallas, 1776*	+					1	C1	D1	W1	D1	W1	AI
28	<i>Chlidonias niger</i> (Linnaeus, 1758)*					+	1	C1	D1	W1	D1	W1	AI
29	<i>Chlidonias hybridus</i> (Pallas, 1811)*			+	+		3	C2	D1	W1	D1	W1	AI
30	<i>Sterna hirundo</i> Linnaeus, 1758*	+	+		+		6	C3	D1	W2	D1	W2	AI

No	Species	Vâlcele Basin	Budeasa Basin	Bascov Basin	Pitești Basin	Golești Basin	Abundance	Class of constancy	Class of dominance	Class of Dzuba index of ecological significance	Class of dominance*	Class of Dzuba index of ecological significance*	Birds Directive (2009/147/EC)
31	<i>Columba palumbus</i> Linnaeus, 1758	+					2	C1	D1	W1			
32	<i>Streptopelia turtur</i> (Linnaeus, 1758)	+					2	C1	D1	W1			
33	<i>Apus apus</i> (Linnaeus, 1758)				+		8	C1	D1	W1			
34	<i>Alcedo atthis</i> (Linnaeus, 1758)*				+		1	C1	D1	W1	D1	W1	AI
35	<i>Upupa epops</i> Linnaeus, 1758				+		2	C1	D1	W1			
36	<i>Riparia riparia</i> (Linnaeus, 1758)		+		+		10	C2	D1	W2			
37	<i>Hirundo rustica</i> Linnaeus, 1758	+	+	+	+		28	C4	D1	W2			
38	<i>Delichon urbica</i> (Linnaeus, 1758)	+	+	+	+		8	C4	D1	W2			
39	<i>Motacilla flava</i> Linnaeus, 1758	+	+		+		5	C3	D1	W1			
40	<i>Motacilla alba</i> Linnaeus, 1758	+	+	+	+		7	C4	D1	W2			
41	<i>Lanius collurio</i> Linnaeus, 1758	+			+		3	C2	D1	W1			AI
42	<i>Pica pica</i> (Linnaeus, 1758)	+			+	+	7	C3	D1	W2			
43	<i>Corvus monedula</i> Linnaeus, 1758				+		40	C1	D2	W2			
44	<i>Corvus frugilegus</i> Linnaeus, 1758				+		20	C1	D1	W2			
45	<i>Acrocephalus palustris</i> Bechstein, 1798*				+	+	2	C2	D1	W1	D1	W1	
46	<i>Sylvia curruca</i> (Linnaeus, 1758)	+					1	C1	D1	W1			
47	<i>Phylloscopus collybita</i> Vieillot, 1817	+			+		3	C2	D1	W1			
48	<i>Parus caeruleus</i> Linnaeus, 1758	+			+		7	C2	D1	W1			
49	<i>Parus major</i> Linnaeus, 1758		+		+		2	C2	D1	W1			
50	<i>Aegithalos caudatus</i> (Linnaeus, 1758)				+		6	C1	D1	W1			
51	<i>Passer domesticus</i> (Linnaeus, 1758)	+			+		10	C2	D1	W2			
52	<i>Passer montanus</i> (Linnaeus, 1758)	+	+		+		40	C3	D2	W2			
53	<i>Fringilla coelebs</i> Linnaeus, 1758				+	+	4	C2	D1	W1			
54	<i>Carduelis chloris</i> (Linnaeus, 1758)				+		2	C1	D1	W1			
55	<i>Carduelis carduelis</i> (Linnaeus, 1758)				+		1	C1	D1	W1			

**Legend:** \* - species dependent on wetlands; + - presence; C1 – occasional species, C2 – accessory species, C3 – constant species, C4 – euconstant species; D1, W1 – subprecedent species, D2, W2 – recedent species, D3, W3 – subdominant species, D4, W4 – dominant species, D5, W5 – eudominant species; AI – Annex I.

The species richness observed in 2017 on the basins was bigger than in 2013 (55 versus 48 species) and, also, the number of individuals (3,551, versus 2,859); the months when the observations were made, both in 2013 and 2017 were warmer and drier than normal ([http://www.ier.ro/webfm\\_send/5189](http://www.ier.ro/webfm_send/5189), <http://www.stirimeteo.com/>, <http://www.asas.ro/wcmqs/>). The situation was similar in the case of the species dependent on wetlands. Their number was bigger in 2017 (30) than in 2013 (27) and, also, their strength (3,331 and 2,594 individuals respectively). Some factors like the time of starting of the migration, that varies each year depending on the weather conditions, the increasing silting of the basins, which in the first phase leads to an enhancement of the species diversity, or the direct human derange, which can be considered less evident in 2017, than in 2013, except the Bascov Basin, may be involved here. So, in 2017, additional to the athletic competition from the Bascov Basin, there were 11 fishermen (with a car) on Golești Basin, 9 fishermen and a boat on Pitești Basin, and 1 kiteboarding man on Budeasa Basin. In 2013, there were 25 fishermen on Golești Basin, 6 fishermen on Pitești Basin, 3 fishermen on Bascov Basin, 20 fishermen on Budeasa Basin and 6 fishermen on Vâlcele Basin.

The most of the species were registered on the Pitești, respectively Golești Basin (Fig. 2). Also, the Pitești Basin had the most of the individuals (including the ones of the dependent on wetlands species), while the Bascov Basin was the last in all situations. By comparison, in 2013, the Bascov Basin was the last regarding the number of species, including the dependent on wetlands ones. Regarding the number of individuals, at that time it was overpassed by the one of the Vâlcele Basin that, despite its larger size, had the lowest values. The Vâlcele Basin is placed upstream and its vegetation is very poor and situated toward its end. It must also be mentioned that the overall antropogenic pressure, in 2013, was the lowest on the Golești and Pitești Basins, and the highest on the Budeasa Basin (Mestecăneanu and Gava, 2016c).



**Figure 2.** The variation of the species and individuals on basins and per total (\* - values for the species dependent on wetlands).

As a result, the density of species and density of individuals were the biggest on the Pitești Basin. The lowest density of species was registered on Budeasa, respectively Vâlcele Basins and the lowest densities of individuals (both for all species and for the species dependent on wetlands) were registered on the Bascov Basin, where the density of species is comparable to the one from 2013; here, the density of individuals is bigger in 2013 when the athletes were absent, that in 2017 when they were present (Table 2).

The correlation between the surface of the basins and the number of all species was 0.44 (positive and moderate correlation), the correlation between the surface of the basins and the number of species dependent of wetlands was 0.04 (positive and very weak correlation), the correlation between the surface of the basins and the number of individuals was  $-0.26$ , and the correlation between the surface of the basins and the number of individuals of species dependent of wetlands was  $-0.31$  (negative and weak correlations). These mean that to some extent the number of species grew as the surface of the basins increased and the number of individuals decreased as the surface of the basins increased. That shows that, at the moment of research, there were other factors more important than the area of the basins that influenced the dynamics of the birds on the basins.

**Table 2.**

The density of the species and individuals on every basin and per total.

Basin	Vâlcele (2017)	Budeasa (2017)	Bascov (2017)	Bascov (2013)	Pitești (2017)	Golești (2017)	Total (2017)
<b>No. species/ha</b>	0.04	0.03	0.07	0.06	0.17	0.05	0.02
<b>No individuals/ha</b>	0.27	0.35	0.09	0.99	13.14	1.72	1.58
<b>No. species/ha*</b>	0.01	0.02	0.04	0.03	0.13	0.03	0.01
<b>No individuals/ha*</b>	0.18	0.33	0.06	0.88	13.03	1.54	1.48

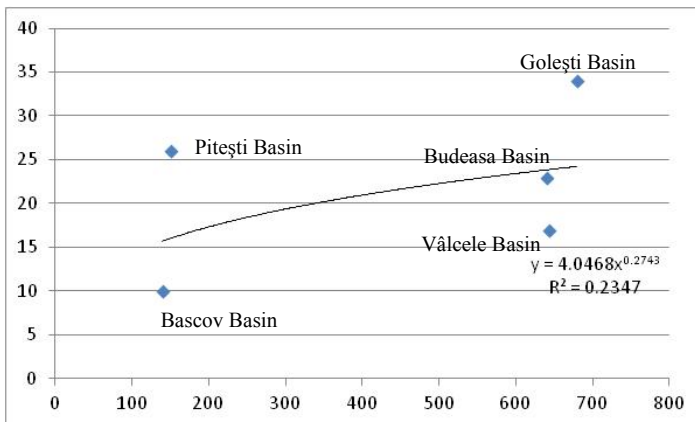
**Legend:** \* - values for the species dependent on wetlands.

Applying the power regression on the relation between the surface of the every dam reservoir and their species richness or their total number of individuals, we detect a positive and quite small (in the case of species) and a moderate (in the case of individuals) slope, but, also, we notice a low (23.47%) or a very low (6.78 %) correlation between the variables (Fig. 3, Fig. 4). The slopes are quite similar in the case of the species and individuals dependent on wetlands, but the correlation between the variable is even lower (3.71%, respectively 5.83%). These suggest that the species rate of accumulation grows slowly as the reservoirs surface increases and the individuals' rate of accumulation grows moderately as the reservoirs surface increases. Consequently, the basins can sustain more species and more

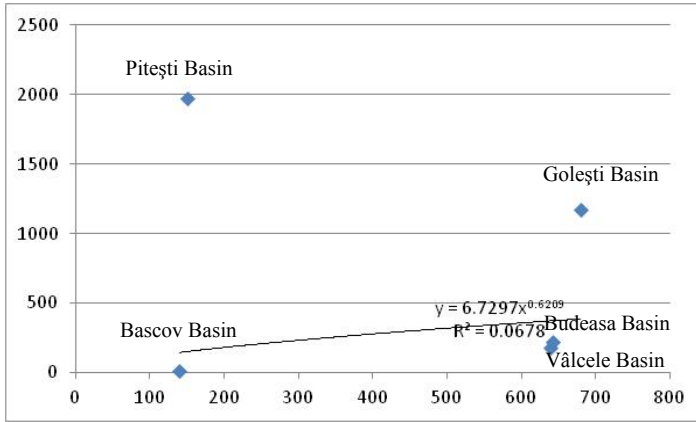


individuals than those that were observed. Because the predictions of the Theory of Island Biogeography can be applied only to the groups of the creatures whose existence is strictly conditioned by a particular type of habitat (Usher, 1987), in this case it should best be applied to the breeding species dependent of wetlands, although at the end of July it is impossible to tell them apart without any doubts.

From the point of view of the similarities between the avifauna of the basins, in 2017, we stated that the smallest similarity was between the Bascov and Pitești avicoenosis, even if the basins have an almost identical area. It must be noted, however, that the real aquatic surface of the Bascov Basin is lower than the initial one because of the islands formed inside. On the other hand, the actual area of the Pitești Basin decreased because of silting, too. Also, even if the Pitești Basin is situated near the Pitești town, the overall anthropogenetical pressure is lower here than on the Bascov Basin, as it has been observed in 2013 (Mestecăneanu and Gava, 2014b). The similarity was the biggest between Budeasa and Vâlcele, two big and consecutive reservoirs (each ca. 640 ha area and 6 km distance among them), except the Jaccard index for all species, when the biggest one was established between Bascov and Budeasa; the two lakes are united, but very different in terms of as area. Otherwise, the similarity between the Bascov Basin and the other basins was small or medium (Tables 3, 4). It must highlighted that the Bray–Curtis index is based on the presence/absence of the species in the samples and on their number of individuals and the Jaccard index is based only on the presence/absence of the respective species in the samples (Gomoiu and Skolka, 2001).



**Figure 3.** The relation between the surface of the basins and their species richness.



**Figure 4.** The relation between the surface of the basins and the strengths of all species.

**Table 3.**

The similarity matrix (by Bray–Curtis) between the avicoenosis (cenosis of species dependent on wetlands) of the dam reservoirs.

Similarity	Vâlcele	Budeasa	Bascov	Pitești	Golești
<b>Vâlcele</b>	-	45.7 (52.6)	9.5 (8.1)	2.8 (2.7)	19.3 (17.7)
<b>Budeasa</b>	-	-	9.3 (7.3)	9.6 (9.7)	24.1 (25.1)
<b>Bascov</b>	-	-	-	0.5 (0.5)	1.8 (1.3)
<b>Pitești</b>	-	-	-	-	24.3 (25.2)
<b>Golești</b>	-	-	-	-	-

**Table 4.**

The similarity matrix (by Jaccard) between the avicoenosis (cenosis of species dependent on wetlands) of the dam reservoirs.

Similarity	Vâlcele	Budeasa	Bascov	Pitești	Golești
<b>Vâlcele</b>	-	37.9 (53.8)	26.9 (25.0)	19.5 (26.0)	35.7 (30.0)
<b>Budeasa</b>	-	-	42.1 (41.6)	26.7 (34.7)	37.8 (47.3)
<b>Bascov</b>	-	-	-	12.5 (18.1)	25.7 (27.7)
<b>Pitești</b>	-	-	-	-	25.0 (37.0)
<b>Golești</b>	-	-	-	-	-

Comparing the similarities between the samples on every basin from July 19, 2013 and July 29, 2017, by Bray-Curtis, it results that the lowest similarity was undoubtedly for the Bascov Basin, regardless if all species or only the species dependent on wetlands were taken into account. By Jaccard, the similarities for the Bascov Basin were in the range of the other similarities of the basins, which varied between 33.33% and 53.84%. That means a relatively big heterogeneity of the species between the years of observations, generally with big differences of strengths

and with less than 50% regular species between samples. It is the consequence of the period of passage for many species, mainly of shores and waders, and probable it should be attenuated through more sessions of monthly observations. The effect of the athletes on the number of individuals was observable in this case, too (Table 5).

In 2017, the Shanon–Wiener ecological diversity was between 1.09 (1.03, in the case of the species of wetland) for Pitești and 2.25 for Vâlcele and Bascov (1.81, in the case of the species of wetland for Golești) and the Simpson ecological diversity was between 1.85 (1.82, in the case of the species of wetland) for Pitești and 26.00 (12.00, in the case of the species of wetland) for Bascov. From the evenness point of view, the smallest evennesses were on the Pitești dam basin: 0.33 (0.34), for the Shanon–Wiener index, and 0.07 (0.09) for the Simpson index. The biggest ones were on the Bascov dam basin: 0.98 (0.97) for the Shanon–Wiener index and 0.65 (0.75) for the Simpson index (Table 6). The natural and the artificial conditions from each basin are reflected here. The values of diversity from the Bascov Basin catch the attention, but these are not the result of a big number of species represented by a big number of individuals, but inversely, these express a relatively low number of species, each with few individuals, as the evenness shows. The low values from Pitești prove that here there was a small number of species that summed the majority of the individuals. It must be said that the Shannon–Wiener index takes into account both the number of species and the number of individuals of each species and the Simpson index takes into account the number of individuals of the species in relationship with the number of individuals of all observed species.

**Table 5.**

The similarities between the avicoenosis on every dam reservoirs and per total.

<b>Similarity</b>	<b>Bray Curtis</b>	<b>Jaccard</b>
<b>Bascov 2013 – Bascov 2017</b>	9.21	35.71
<b>Bascov 2013* – Bascov 2017*</b>	7.51	37.5
<b>Budeasa 2013 – Budeasa 2017</b>	38.68	41.66
<b>Budeasa 2013* – Budeasa 2017*</b>	39.78	53.84
<b>Golesti 2013 – Golesti 2017</b>	40.42	39.53
<b>Golesti 2013* – Golesti 2017*</b>	39.58	45.83
<b>Pitesti 2013 – Pitesti 2017</b>	39.52	34.88
<b>Pitesti 2013* – Pitesti 2017*</b>	40.35	40.74
<b>Valcele 2013 – Valcele 2017</b>	45.27	35.71
<b>Valcele 2013* – Valcele 2017*</b>	50.26	33.33
<b>Total 2013 – Total 2017</b>	51.74	53.73
<b>Total 2013* – Total 2017*</b>	51.60	51.35

**Legend:** \* - values for the species dependent on wetlands.

According to the constancy we remark that the occasional species were the most numerous (28 species, 50.91%, respectively 16 species dependent on wetlands, 53.33%), while the constant species were the less numerous (6 species, 10.91%, respectively 3 species dependent on wetlands, 10%). About the dominance, the most

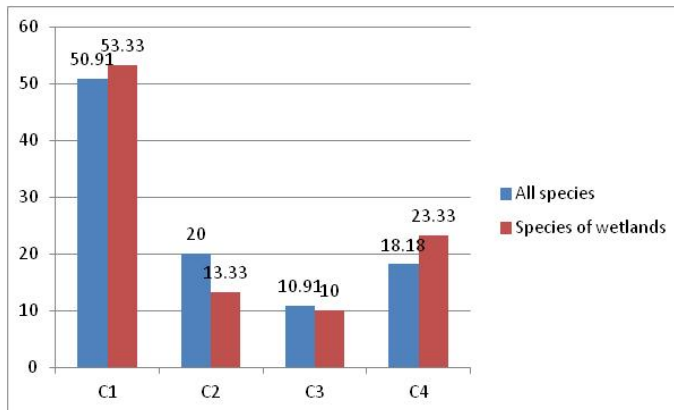
numerous were the subrecent species (46 species, 83.64%, respectively 23 species dependent on wetlands, 76.67%), the other groups being poorly represented. In the case of Dzuba ecological index of ecological significance, also the subrecent species were the most (33 species, 60.00%, respectively 16 species dependent on wetlands, 53%). The dominant species were the least represented (1 species, 1.82 %, respectively 1 species dependent on wetlands, 3.33%), (Table 1, Figs. 5, 6, 7).

**Table 6.**

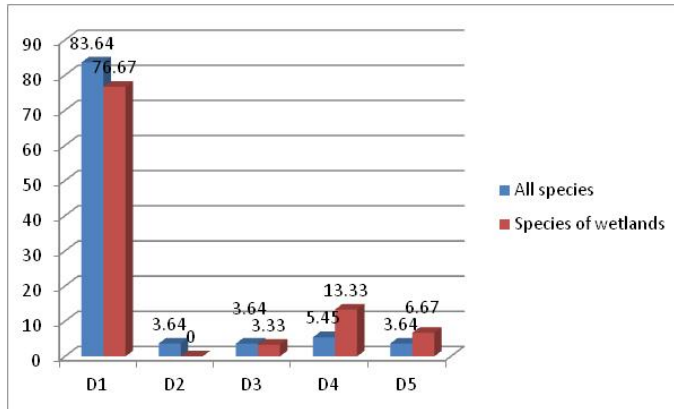
The ecological diversity and the evenness of the avifauna from the dam basins.

Basin	Shanon Wiener index	Hsmax	Shanon Wiener evenness	Simpson index (1/λ)	S	Simpson evenness
Vâlcele	2.25	3.14	0.72	6.33	26.32	0.24
Vâlcele*	1.51	2.20	0.69	3.45	9.69	0.36
Budeasa	1.98	2.83	0.70	5.07	18.32	0.28
Budeasa*	1.78	2.40	0.74	4.52	11.55	0.39
Bascov	2.25	2.30	0.98	26.00	40	0.65
Bascov*	1.74	1.79	0.97	12.00	16	0.75
Pitești	1.09	3.26	0.33	1.85	26.33	0.07
Pitești*	1.03	3.00	0.34	1.82	20.19	0.09
Golești	2.19	3.53	0.62	5.16	34.98	0.15
Golești*	1.81	2.83	0.64	4.16	17.26	0.24
Overall	2.09	4.01	0.52	4.27	55.84	0.08
Overall*	1.80	3.40	0.53	3.76	30.26	0.12

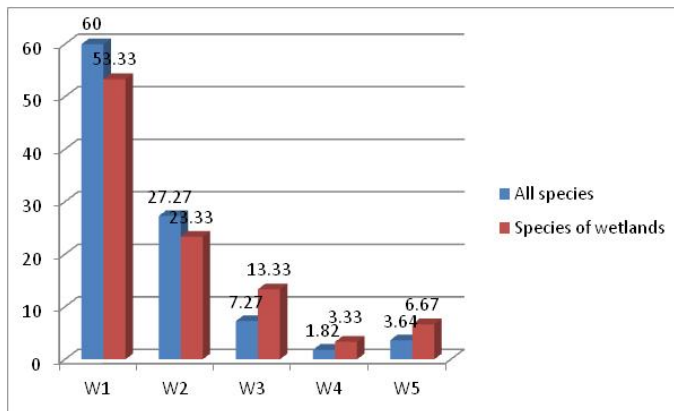
**Legend:** \* - values for the species dependent on wetlands.



**Figure 5.** The distribution of the species by categories of constancy (C1 – occasional species, C2 – accessory species, C3 – constant species, C4 – euconstant species).

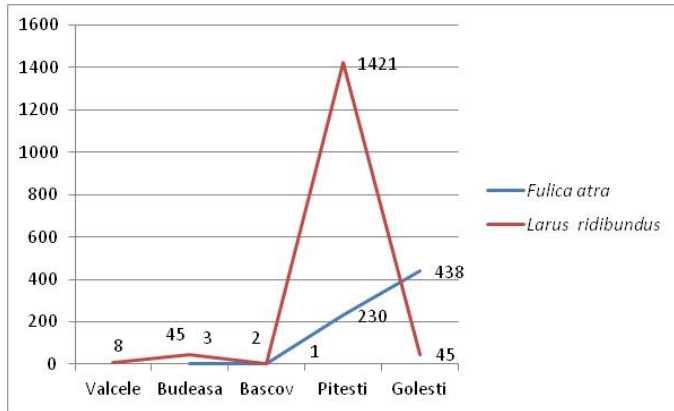


**Figure 6.** The distribution of the species by categories of dominance (D1 – subprecedent species, D2 – recedent species, D3 – subdominant species, D4 – dominant species, D5 – eudominant species).



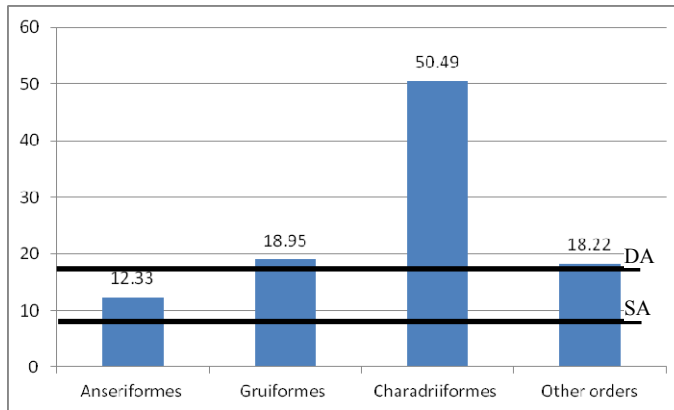
**Figure 7.** The distribution of the species by categories of Dzuba index of ecological significance (W1 – subprecedent species, W2 – recedent species, W3 – subdominant species, W4 – dominant species, W5 – eudominant species).

The only eudominant species were *Larus ridibundus* and *Fulica atra* (3.64% of all species, respectively 6.67% of the species dependent on wetlands). The Pitești Basin was preferred by *Larus ridibundus*, while the Golești Basin was preferred by *Fulica atra* (Fig. 8). The depth of the water, the food and the lower degree of anthropogenic pressure contributed to this.

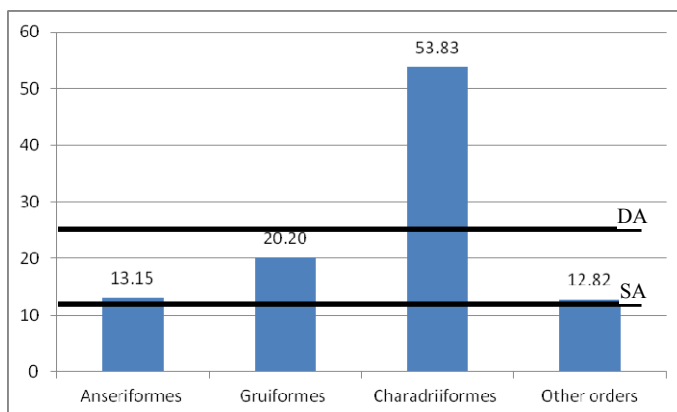


**Figure 8.** The variation of strengths of the eudominant species on every dam reservoir.

As a result of the facts previously shown, by the index of relation between the orders, Charadriiformes (with 1,993 individuals) and Gruiformes (with 673 individuals) were the overdominant orders, Anseriformes (with 438 individuals) was the dominant order and the other orders were complementary (Fig. 9). At the level of the species dependent on wetlands, Charadriiformes remained the only overdominant order. Gruiformes and Anseriformes were the dominant orders, the others being complementary (Fig. 10).



**Figure 9.** The participation of the orders to the formation of the avicoenose (SA – the static axis, DA – the dominance axis).



**Figure 10.** The participation of the orders to the formation of the coenose of species dependent on wetlands (SA – the static axis, DA – the dominance axis).

Inside the Charadriiformes, *Larus ridibundus* was the overdominant species, with 84.83% of the individuals *Larus michahellis* was the dominant species, with 11.43% of the individuals, the others (3.74% of the individuals) being complementary. Inside the Gruiformes order, formed only by two species, *Fulica atra* was the dominant species, with 99.85% of individuals, and *Gallinula chloropus* was the complementary species, with 0.15%.

Some species were observed in 2017 with chicks or independent juveniles: *Podiceps nigricollis* (with 2 well developed juveniles on the Golești Basin), *Fulica atra* (with 3 medium juveniles on the Pitești Basin), *Larus michahellis* (with many pairs that breed in the city of Pitești), *Larus ridibundus*, *Tringa glareola*, *Phalacrocorax pygmaeus*, *Phalacrocorax carbo*, *Egretta garzetta*, *Ardea cinerea*, *Vanellus vanellus*, etc. but a few did not breed in the area. It is generally known that the artificial basins are places less attractive for the birds in the breeding season than the natural ones (Munteanu and Mătieș, 1983).

12 species (21.81% of all, (*Phalacrocorax pygmaeus*, *Egretta garzetta*, *Ardeola ralloides*, *Nycticorax nycticorax*, *Tringa glareola*, *Himantopus himantopus*, *Larus minutus*, *Chlidonias niger*, *Chlidonias hybridus*, *Sterna hirundo*, *Alcedo atthis* and *Lanius collurio*) are in the AI of the Birds Directive (2009/147/EC) and 2 of them (16.66%, *Chlidonias hybridus* and *Sterna hirundo*) were observed on the Bascov Basin. Measures for the habitat protection intended to make sure their survival and reproduction in their area of distribution must be taken ([http://ec.europa.eu/environment/nature/legislation/birdsdirective/index\\_en.htm](http://ec.europa.eu/environment/nature/legislation/birdsdirective/index_en.htm)). *Tringa glareola* and *Larus minutus* were surely in passage; the specimens of the others seen either in migration or had a certain status of breeding in the area, being observed in the characteristic habitat.

### Other aspects of the avicoenose from the Bascov Basin

As we have seen, the birds' fauna of the Bascov Basin was very poor, so that a total of only 14 species were recorded here during both dates of research (Table 7). 9 species were recorded in the sample from 2013 (when the athletes were absent), and, 10, in the one from 2017 (when they were present). Instead, the number of individuals was clearly bigger in 2013 (139, versus 13), when *Fulica atra* numbered almost 100 individuals and *Larus ridibundus* almost 20 (Mestecăneanu and Gava, 2014a). In 2017, these counted only 1, respectively 2 individuals and this was obviously a consequence of the athletes' competition that determined the birds to hide or to move somewhere else. In 2017, the number of individuals was smaller than in 2013 (by 90.64%) and, also, the number of individuals of the species dependent on wetlands (by 92.74%); similarly, the strength of *Fulica atra* was smaller (by 98.95%) in 2017 than in 2013 and, also, the strength of *Larus ridibundus* (by 89.47%).

**Table 7.**

The avicoenose of the Bascov Basin.

No.	Species	19.07.2013 (without athletes)	29.07.2017 (with athletes)
1.	<i>Podiceps cristatus</i> *	0	2
2.	<i>Egretta garzetta</i> *	1	0
3.	<i>Ciconia ciconia</i> *	1	0
4.	<i>Anas platyrhynchos</i> *	0	1
5.	<i>Fulica atra</i> *	96	1
6.	<i>Larus ridibundus</i> *	19	2
7.	<i>Chlidonias hybridus</i> *	0	1
8.	<i>Sterna hirundo</i> *	7	2
9.	<i>Hirundo rustica</i>	0	1
10.	<i>Delichon urbica</i>	4	1
11.	<i>Motacilla alba</i>	2	1
12.	<i>Pica pica</i>	3	0
13.	<i>Passer domesticus</i>	6	0
14.	<i>Passer montanus</i>	0	1
Number of species		9	10
Number of individuals		139	13
Number of species*		5	6
Number of individuals*		124	9

**Legend:** \* - species dependent on wetlands.

As resulted from the Jaccard similarity, too, 5 species (35.71% of all, *Fulica atra*, *Larus ridibundus*, *Sterna hirundo*, *Delichon urbica*, and *Motacilla alba*) were common in the two days of observations. In the absence of the athletes, 4 additional species (28.57% of all, *Egretta garzetta*, *Ciconia ciconia*, *Pica pica* and *Passer domesticus*) were seen and when the athletes were present, 5 species (35.71% of



all, *Podiceps cristatus*, *Anas platyrhynchos*, *Chlidonias hybridus*, *Hirundo rustica* and *Passer montanus*). 8 species (57.14 of all) were dependent on wetlands and only 3 of them (37.5%) were observed both in 2013 and 2017; 5 species (62.5%) have been registered only in 2013 and 6 (75%) only in 2017. The few individuals of the latter seemed to be less sensitive to the stress provoked by people, but, because the rest of the basin was occupied by the boats, they were located toward the dam, and, here, it is noticeable the presence of a pair of *Podiceps cristatus* in nest. This was the only confirmed breeding species in the area, fact that vouches the idea that the presence of the athletes on the water obstructs mainly the formation of a rich aquatic breeding avifauna, a topic that was discussed on other occasions, too (Mestecăneanu and Gava, 2014a,b, 2016c etc.).

### Conclusions

The avifauna of the basins between Vâlcele and Golești from ROSPA0062 – The dam basins from the Argeș River, observed in the breeding season (or passage season for some species) was relatively poor: 55 species (30 dependent on wetlands), from 12 orders. It reflects both the natural and anthropogenic conditions from the date of study, seasonal or permanent. Even if on the Bascov Basin a sportsmen competition was in progress, the general qualitative and quantitative situation of the birds from all basins was better in 2017 than in 2013, when a similar study was effected in the same month, when the athletes were not present in the area.

The majority of the species was formed of occasional or subrecent species. *Anas platyrhynchos* and *Larus ridibundus* were the only species observed on all basins, and *Larus ridibundus* and *Fulica atra* had the most individuals. Therefore, they determined the hierarchy of the orders, where the Charadriiformes and the Gruiformes were the most important.

Because of the strongly anthropogenic characters of the dam basins, a few species with chicks were observed.

Among the 55 observed species, only 12 species belong to the Annex I of the Birds Directive, some of them being in passage.

Like on other occasions, independently of the fact that a human derange occurred or not at the time of the observations, the avifauna of the Bascov Basin proved to be the most modest of all. The number of species or their strengths, the density of species and individuals, the similarity between the basins, the index of diversity and the evenness sustain this assertion. This is an effect of the anthropogenic pressure, mainly because of the frequent trainings and competitions of the athletes on water and, also, the presence of the permanent stands and installations that mark the corridors of navigation. All of these intensively influence the breeding, too, only a few pairs of aquatic species having success in raising chicks year by year.

Comparing the two sets of observations, the one from 2013 and the one from 2017, obtained in relatively similar climatic conditions, it results that the avifauna of the Bascov Basin was negatively influenced by the presence of the sportsmen and the spectators at the time of contest, less in terms of make up of the species, but especially in terms of strengths. Especially the birds dependent on wetlands were affected and they had to hide or to leave the area in search for less disturbed spaces. It is unlikely that part of the individuals flew to Pitești Basin, situated at over 4 km distance, where the strengths were the biggest of all basins, and probably some of them went to the nearby Budeasa Basin.

The dam basins where the research was performed can sustain a richer avifauna than that recorded, particularly the Bascov Basin. In the circumstances in which this basin belongs to an important birds area, included in Natura 2000 Network, it is advisable, from the birds' protected point of view, to move the nautical base (although it is one of national importance) on another basin less relevant for the avifauna, outside of the conservation area.

## REFERENCES

- Barco, A., Nedelcu, E. (1974) *Județul Argeș*. Edit. Academiei R. S. România. București. pp. 168
- Bruun, B., Delin, H., Svensson, L., Singer, A., Zetterström, D., Munteanu, D. (1999) *Păsările din România și Europa. Determinator ilustrat*, Hamlyn Guide, Societatea Ornitologică Română, Octopus Publishing Group Ltd., pp. 320
- Conete, D. (2011) *Cercetări ecologice asupra avifaunei unor lacuri de baraj din zona mijlocie a văii Argeșului*, PhD thesis, Institutul de Biologie al Academiei Române București, pp. 370
- Conete, D., Gava, R., Mestecăneanu, A. (2005a) *Observații de tip monitoring asupra păsărilor de baltă de pe lacul de acumulare Bascov – râul Argeș, în perioada 2000 – 2004*. Studii și Comunicări, Științele Naturii, Muzeul Olteniei, Craiova, **21**: 181-185
- Conete, D., Mestecăneanu, A., Gava, R. (2006) Speciile de păsări din situl AIA „Lacurile de acumulare de pe Argeș” protejate pe plan național și european, *Argesis, Studii și Comunicări, Științele Naturii*, Muzeul Județean Argeș, Pitești, **14**: 103-115
- Conete, D., Mestecăneanu, A., Gava, R. (2008) *Ecological researches about avifauna of the Bascov Basin in the hiemal and prevernal aspects (2008 - 2009)*. *Argesis, Studii și Comunicări, Științele Naturii*, Muzeul Județean Argeș, Pitești, **16**: 81-92
- Conete, D., Mestecăneanu, A., Gava, R. (2011) The breeding bird species from the middle hydrographical basin of the Arges River (Romania), *Research People and Actual Tasks on Multidisciplinary Sciences*, Lozenec, Bulgaria, **3**: 29-34
- Conete, D., Mestecăneanu, A., Gava, R. (2012) Ornithological researches on the Golești Dam Lake (Argeș County, Romania) during 2003 – 2010, *Analele Universității din Oradea, Fascicula Biologie*, University of Oradea Publishing House, **19 (1)**: 84-92

- Conete, D., Balaban, R. E., Mestecăneanu, A., Gava, R. (2005b) *Cercetări ornitologice pe valea râului Argeș în zona lacului de acumulare Bascov*. Argesis, Studii și Comunicări, Științele Naturii, Muzeul Județean Argeș, Pitești, **13**: 161-175
- David, A. (2008) *Ecologia populațiilor de păsări din Câmpia Fizeșului*. Presa Universitară Clujeană. Cluj-Napoca. pp. 148
- Gache, C. (2002) *Dinamica avifaunei în bazinul râului Prut*. Publicațiile Societății Ornitologice Române, Cluj-Napoca. pp. 210
- Gava, R. (1997) Acumulările hidroenergetice de pe râul Argeș, posibile Arii de Importanță Avifaunistică, *Lucrările simpozionului Arie de Importanță Avifaunistică din România*, Publicațiile S. O. R., Cluj-Napoca, **3**: 39-42
- Gava, R., Mestecăneanu, A., Conete, D. (2004a) The reservoirs of the Argeș River valley – important bird areas, *Limnological Reports*, Internat. Assoc. Danube. Res., Novi Sad, Serbia and Montenegro, **35**: 619-631
- Gava, R., Mestecăneanu, A., Conete, D. (2007) The Avifauna of the Middle Basin of Argeș River Artificial Lakes, *Analele Științifice ale Universității „Al. I. Cuza” Iași, s. Biologie animală*, **53**: 187-195
- Gava, R., Mestecăneanu, A., Conete, D. (2011). Species of birds rarely observed in the Important Bird Area „The Dam lakes of the Argeș River” during of the International waterbird Count (1999 – 2012), *Argesis. Studii și Comunicări, Științele Naturii*, Muzeul Județean Argeș, Pitești, **19**: 79-86
- Gava, R., Mestecăneanu, A., Conete, D., Mestecăneanu, F. (2004b) Recensământul păsărilor de baltă din ianuarie de pe lacurile din bazinul mijlociu al râului Argeș, în perioada 2000 – 2004, *Argesis, Studii și Comunicări, Științele Naturii*, Muzeul Județean Argeș, Pitești, **12**: 125-132
- Gomoiu, M.-T., Skolka, M. (2001) *Ecologie. Metodologii pentru studii ecologice*. Ovidius University Press, Constanța. pp. 170
- Kelemen, A., Szombath, Z. (1975) Studiul fenodinamic al familiei Muscicapidelor. *Nymphaea*, Muzeul Țării Crișurilor, Oradea, **3**: 245-256
- MacArthur, R. H., Wilson, E. O. (1967). *The Theory of Island Biogeography*. Princeton University Press, Princeton. pp. 244
- Management Plan of Natura 2000 Site, ROSPA0062 The dam basins from the Argeș River (Planul de management al sitului Natura 2000, ROSPA0062 Lacurile de acumulare de pe Argeș) (2015) Eco-Montan 2000. Curtea de Argeș
- Mătieș, M. (1969) Cercetări avifenologice de-a lungul bazinului mijlociu și superior al Argeșului între 1 ianuarie – 31 mai 1968, *Studii și Comunicări*, Muzeul Județean Argeș, **2**: 73-90
- Mestecăneanu, A., Gava, R. (2014a) Ornithological observations on the Bascov Basin between February 2013 & January 2014, *Drobeta, Seria Științele Naturii*, Muzeul Regiunii Porților de Fier, Drobeta Turnu Severin, **24**: 139-154
- Mestecăneanu, A., Gava, R., (2014b) The impact of the anthropogenic pressure on the avifauna from Bascov dam reservoir (Argeș River) in the recent years (2013-2014). *Argesis. Studii și Comunicări, Științele Naturii*, Muzeul Județean Argeș, Pitești, **22**: 89-100

- Mestecăneanu, A., Gava, R. (2015a) The avifauna from Vâlcele, Budeasa, Bascov, Pitești, and Golești dam reservoirs observed in the autumnal season (2013), *Drobeta, Seria Științele Naturii*, Muzeul Regiunii Porților de Fier, Drobeta Turnu Severin, **25**: 103-116
- Mestecăneanu, A., Gava, R. (2015b) The avifauna from Vâlcele, Budeasa, Bascov, Pitești, and Golești dam reservoirs observed in the hiemal season (2013 and 2014), *Olenia, Studii și comunicări*, Științele Naturii, Muzeul Olteniei Craiova, **31 (1)**: 154-165
- Mestecăneanu, A., Gava, R. (2016a) A year of ornithological observations on the Vâlcele, Budeasa, Bascov, Pitești, and Golești dam reservoirs from ROSPA0062 Lacurile de acumulare de pe Argeș. *Olenia, Studii și comunicări*, Științele Naturii, Muzeul Olteniei Craiova, **32 (1)**: 97-109
- Mestecăneanu, A., Gava, R. (2016b) The census of the water birds from the dam basins from the Argeș River, between Vâlcele and Golești (January, 2015), *Argesis, Studii și Comunicări*, Științele Naturii, Muzeul Județean Argeș, Pitești, **24**: 81-90
- Mestecăneanu, A., Gava, R. (2016c) The influence of the habitats and anthropogenic pressure on birds, observed during February 2013 – January 2014 on the dam reservoirs from the Argeș River between Vâlcele and Golești, *Scientific Papers, Current Trends in Natural Sciences*, University of Pitești, Faculty of Sciences, **5 (9)**: 18-27
- Mestecăneanu, A., Gava, R. (2017) The Anseriformes from the basins of the Argeș River between Vâlcele and Golești (Argeș County, Romania) in February 2013 – January 2014, *Scientific Papers, Current Trends in Natural Sciences*, University of Pitești, Faculty of Sciences, **6 (11)**: 135-147
- Mestecăneanu, A., Conete, D., Gava, R. (2004) Contribuții la cunoașterea păsărilor clocitoare din bazinul mijlociu al râului Argeș, *Scripta Ornithologica Romaniae*, Cluj Napoca, **1**: 17-20
- Mestecăneanu, A., Conete, D., Gava, R. (2010) Ecological research-studies regarding the avifauna during the hiemal period from the basins area of the Argeș River between 2000 and 2010, *Annals, Food Science and Tehnology*, Universitatea Valahia, Târgoviște, **11, 2**: 127-135
- Mestecăneanu, A., Conete, D., Gava, R. (2013) The midwinter waterbird census from the basins Vâlcele, Budeasa, Bascov, Pitești and Golești from the Argeș River (January 2013), *Scientific Papers, Current Trends in Natural Sciences*. University of Pitești, Faculty of Sciences, **2 (3)**: 51-58
- Munteanu, D., Mătieș, M. (1983) Modificări induse de lacurile de acumulare în structura și dinamica avifaunei, *Analele Banatului, Științele Naturii*, Muzeul Banatului, Timișoara, **1**: 217-225
- Munteanu, D., Toniuc, N., Weber, P., Szabó, J., Marinov, M. (1989) Evaluarea efectivelor păsărilor acvatice în cartierele lor de iernare din România (1988, 1989), *Ocotirea naturii și mediului înconjurător*, București, **33 (2)**: 105-112
- Stan, G. (1995) Metode statistice cu aplicații în cercetări entomologice (VII), *Buletin de informare al Societății Lepidopterologice Române*, **6 (1-2)**: 67-96
- Usher, M. B. (1987) Effects of fragmentation on communities and populations: a review with applications to wildlife conservation. In: *Nature conservation: the role of remnants of native vegetation*, Saunders, D. A., Arnold, G.W., Burbidge, A.A., Hopkins A. J. M. (eds), Surrey Beatty and Sons, CIRO and CALM, pp. 103-120
- Zamfirescu, Ș. R., Zamfirescu, O. (2006) *Elemente de statistică aplicate în ecologie*. Editura Universității Alexandru Ioan Cuza, Iași, pp. 218